

WICKED GARDEN

As recorded by Stone Temple Pilots

(From the 1993 Album CORE)

Wor

A Intro

Slow Rock ♩ = 80

G D A7sus4

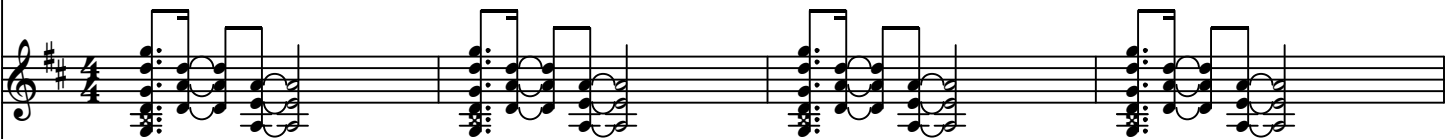
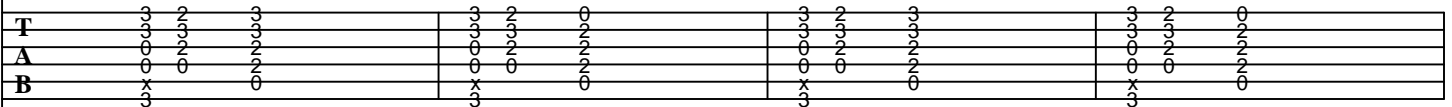
G D A

G D A7sus4

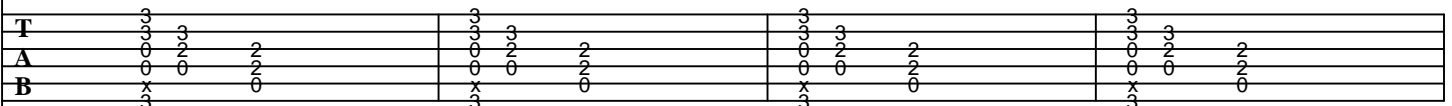
G D A



Gtr I *fff* w/ dist.

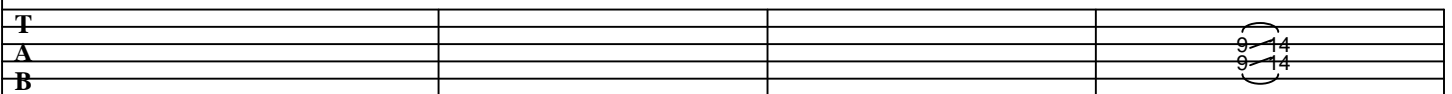


Gtr II *fff* w/ dist.



Gtr III *fff* w/ dist.

w/ slide



sl.

B Pre-Verse

The image displays a musical score for the song "The Sound of Silence" by Simon & Garfunkel. The score is written for guitar and bass, with a key signature of one sharp (F#) and a common time signature (C).

Guitar Part (Gtr I, II): The guitar part is written in a single staff. It features a melodic line in the treble clef and a bass line in the bass clef. The melody is composed of eighth and sixteenth notes, with a prominent F# note in the treble. The bass line consists of a steady eighth-note pattern. The guitar part is marked with "G5" and "A5" above the staff, indicating the fifth fret. The guitar is played with a pick, as indicated by the "p.M." (pick) notation.

Bass Part (B): The bass part is written in a single staff. It features a melodic line in the treble clef and a bass line in the bass clef. The melody is composed of eighth and sixteenth notes, with a prominent F# note in the treble. The bass line consists of a steady eighth-note pattern. The bass part is marked with "G5" and "A5" above the staff, indicating the fifth fret. The bass is played with a pick, as indicated by the "p.M." (pick) notation.

Drum Part (Drums): The drum part is written in a single staff. It features a melodic line in the treble clef and a bass line in the bass clef. The melody is composed of eighth and sixteenth notes, with a prominent F# note in the treble. The bass line consists of a steady eighth-note pattern. The drum part is marked with "G5" and "A5" above the staff, indicating the fifth fret. The drums are played with a pick, as indicated by the "p.M." (pick) notation.

Other Instruments: The score also includes parts for "Gtr IV (clean w/ heavy reverb)" and "Bass (clean w/ heavy reverb)". The "Gtr IV" part is marked with "fff" (fortissimo) and the "Bass" part is marked with "fff" (fortissimo).

[illegible]

C Verse 1

9

N.C.(A) Asus4 A N.C.(A) Asus4 A

Gtr I

T
A 5 7 7 7 7 7 7 7 7 7 7 6
B 0 0 0 0 0 0 0 0 0 0 0 0

H H

Gtr IV

T
A 7 6 (6) 6
B

11

N.C.(A) Asus4 A N.C.(A) A5 G5

Gtr I

T
A 5 7 7 7 7 7 7 7 7 7 7 6
B 0 0 0 0 0 0 0 0 0 0 0 0

H H

Gtr IV

T
A 7 6 (6) 2 2 0 0
B 2 2 0 0

Gtrs II, IV

Gtr III

P.S.

T
A x x x x
B x x x x

sl.

D Chorus Part 1

[illegible]

15

Gtr I, II

Gtr IV

Gtr III

mf steady gliss. w/ slide

E Verse 2

N.C.(A) A7sus4 A N.C.(A) A7sus4 A

17

Gtr I

T
A
B

H H

Gtr IV

T
A
B

7 6 (6) 6

N.C.(A) A7sus4 A N.C.(A) A5 G5

19

Gtr IV

Gtrs II, IV

T
A
B

H H sl.

T
A
B

7 6 (6) 2 2 0 0
2 2 0 0

F Chorus Part 1

[2] Chorus Part 1

G5 A5

21

Gtrs I, II P.M.--| P.M.--| P.M. P.M.--| P.M.--| P.M.--| P.M. P.M.--|

T
A
B

Gtr IV

T
A
B

2 0 0 (0) 2 0 0

23

G5 A5 A G5 G5 F#5

Gtrs I, II P.M. - P.M. - P.M. P.M. - P.M. - P.M. - P.M. -

T A B

Gtr IV

T A B

G Chorus Part 2

25

F#5 D5 B5 F#5

Gtrs I, P.M.

P.M.

T

A

B

27 F#5 D5 B5 F#5

P.M. P.M.

T
A
B

29 F#5 D5 B5 F#5

P.M. P.M.

T
A
B

31 F#5 D5 E7

P.M.

T
A
B

33 E7 G5

T
A
B

[H] Chorus Part 3

34 G5 F#5 G5 F#5 G5 A5 F#5 G5 F#5 G5 F#5 G5 F#5 G5 A5 G5

T
A
B

36

G5 F#5 G5 F#5 G5 A5 F#5 G5 F#5 G5 F#5 G5 A5 G5

T

A

B

5 4 4 5 4 5 7 7 4 5 (5) 5 4 4 5 4 5 7 7 x x 5
5 4 4 5 4 5 5 5 4 5 5 5 4 5 5 5 x x 5
5 4 4 5 4 5 5 5 4 5 5 5 4 5 5 5 x x 5

38

G5 F#5 G5 F#5 G5 A5 F#5 G5 F#5 G5 F#5 G5 F#5 G5 A5 G5

T

A

B

40

40

T

A

B

I Pre-Verse

42

G5 A5

G5 A5

G5

Gtrs I, II P.M.-| P.M.-| P.M. P.M.-| P.M.-| P.M. P.M.-|

T

A

B

Gtr IV

T
A 2 0 0 (0) 2 0 0
B

44

G5 A5

G5 A5

G5

Gtrs I, II P.M. - - P.M. - - P.M. P.M. - - P.M. - - P.M. P.M. - -

T

A

B

sl.

Gtr IV

T

A

B

2 0 0 (0) 2 0 0

Gtr III

fff steady gliss. w/ slide

T

A

B

1 5 12

sl. sl. sl.

J Verse 3

N.C.(A) Asus4 A N.C.(A) Asus4 A

Gtr I

T
A
B

H H

T
A
B

(6)

[illegible]

The musical score for 'The Rose Tree' is presented in a three-part format: a vocal melody, a guitar accompaniment, and a bass line. The key signature is one sharp (F#), and the time signature is 4/4. The melody is written in a soprano clef and includes a capo on the 7th fret, indicated by 'E7' above the staff. The guitar part is in standard tuning with a capo on the 7th fret, and the bass part is in standard tuning. The score is divided into two systems by a double bar line. The first system contains 10 measures, and the second system contains 10 measures. The melody features a mix of eighth and sixteenth notes, with some measures containing triplets. The guitar accompaniment consists of a steady eighth-note pattern, and the bass line provides a simple harmonic foundation with eighth notes.

[illegible]**M Chorus Part 3**

65

G5 F#5 G5 F#5 G5 A5 F#5 G5 F#5 G5 F#5 G5 F#5 G5 A5 G5

T

A

B

5 4 5 4 5 7 7 4 5 (5) 5 4 5 4 5 7 7 x x 5
5 5 5 5 5 7 7 4 5 (5) 5 4 5 4 5 7 7 x x 5
5 2 5 2 5 5 5 2 5 (5) 5 2 5 2 5 5 5 x x 5

67

T

A

B

5 4 5 4 5 7 7 4 5 (5) 5 4 5 4 5 7 7 x x 5

5 4 2 3 2 5 5 0 2 3 3 3 2 3 2 5 5 x x 5

69

G5 F#5 G5 F#5 G5 A5 F#5 G5 F#5 G5 F#5 G5 A5 G5

T

A

B

71

G5 F#5 G5 F#5 G5 A5 F#5 G5 F#5 G5 A5 A5

T

A

B

[N] Outro

73

G D A7sus4 G D A G D A7sus4 G D A

Gtr I

T

A

B

Gtr II

T

A

B

Gtr III

T

A

B

w/ slide

sl.

1

A

Gtr I

off

T

A

B

(0)

(2)

(2)

(2)

(0)

Gtr II

off

T

A

B

(2)

(2)

(0)

Gtr III

gradually slide down

T

A

B

(14)

(14)

(14)

7

7

2

2

sl. *sl.*